



ITB 45

Fully adaptable to meet the needs of the marine construction project as required by the customer. A large platform (67.1 m long x 17.7 m wide) provides ample space for a variety of marine projects.

Registration:

Vessel Type: DP Barge
Built: McKenzie Barge and Marine Ltd.
Year Built: 1979
Official Number: 392787
IMO Number: 8645911
Flag: Canada
Rebuilt: 2010
Owner: Island Tug and Barge Ltd.
Port of Registry: Vancouver BC

Dimensions:

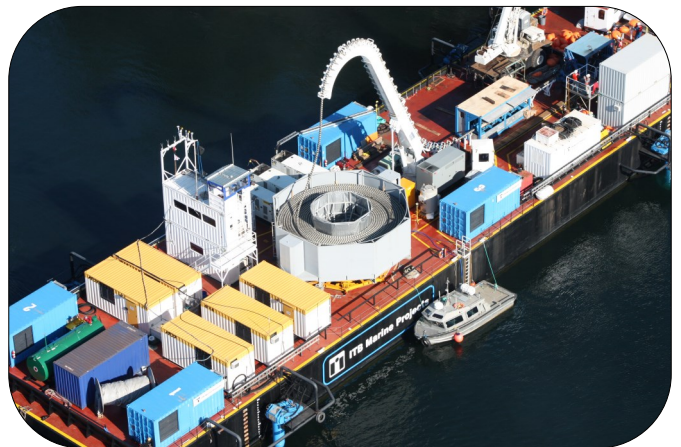
Length, overall: 67.1m/220.1'
Breadth, moulded: 17.7m/58'
Depth, moulded: 1.19m/17'
Lightship Displacement: 637.67t
Gross Tonnage: 175t
Full Load Displacement: 4406.92t
Full Load Draft: 4.284m/14'
Full Load Air Draft: 6.986m/22.9'

Features:

DP Systems: Kongsberg K-Pos DP-21
Thrusters: 4 x Thrustmaster OD-500N
Power units: 4 x Caterpillar 3412 DITT, 500 BHP each
Max Thrust: 13,400 lbs

Updated: July 2014

Equipped with options such Azipod Thrusters and a DP System, the barge can be configured with A-Frames, linear traction machines and various reels for cable retrieval, installation and repair and multiple projects. Mobilization is done at the ITB maintenance facility in Burnaby, BC.



ITB Subsea Ltd.

Telephone: 604-984-8393 info@ITBSubsea.com ITBSubsea.com

