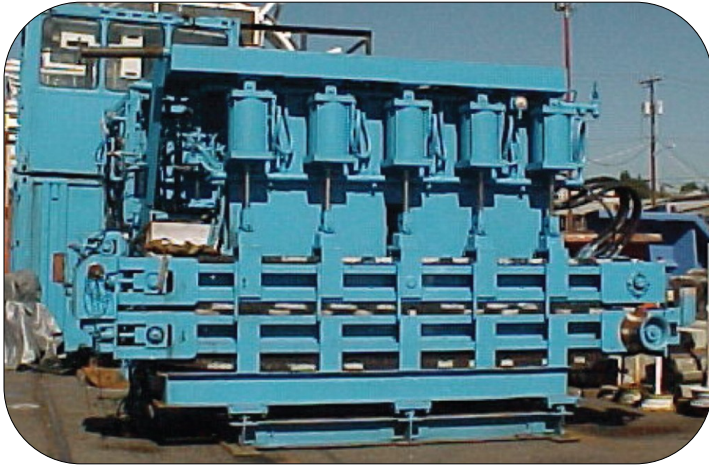




ITB Subsea

ITB Marine Group



Linear Cable Machine (LCM-3)

General Characteristics

Pull capacity: 10mt

During laying: 10mt

During recovery: 10mt

All hydraulic drive

50cfm control and clamping air supply

Clamping force: 9.0mt

All functions remotely controlled from an operator console

Cable/flexible pipe diameter capacity

20mm to 280mm

Machine weight: 17mt or customer supplied

Laying speed: @ 10mt tension 2.8km/h

@ 5mt tension 5.5km/h

During cable recovery: 1.8km/h

John Deer 6068 HF 485 diesel drive engine

Side loading

Grip length: 129" (3.28m)

Total length meter with mechanical, and remote electronic readout

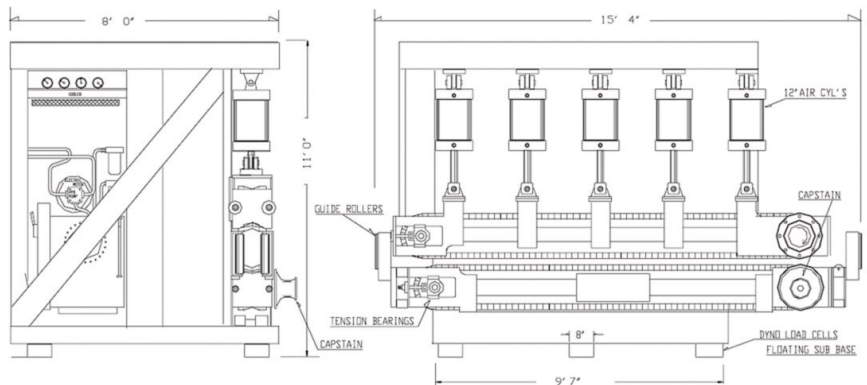
Integral dynamometer monitors laying tension at all times

Dimensions:

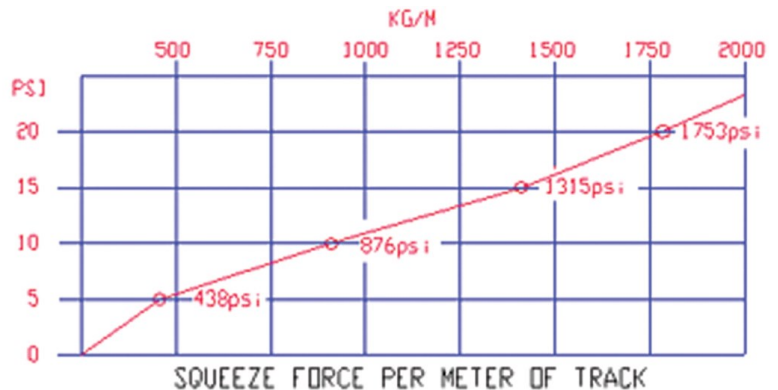
5.18m L x 2.44m W x 3.0m H

Designed to handle power cables, armored fiber optic cables, umbilical, and flexible pipe from reels, rotating drums, or horizontal coils.

2009: Completely refurbished by Puget Sound Hydraulics



Below: single machine squeeze force



Updated: June 2014

ITB Subsea Ltd.

Telephone: 604-984-8393 • info@ITBSubsea.com • ITBSubsea.com

